


 SEARCH

 Search All Classified SEARCH

[HOME](#)
[SEARCH](#)
[ARCHIVES](#)
[MAILBOX](#)
[INFORMATION AGENT](#)
[NEWS & COLUMNS](#)
[FILM](#)
[EATS & DRINKS](#)
[SPORTS](#)
[COMICS](#)
[MUSIC](#)
[ARTS & ENTERTAINMENT](#)
[BEST OF MANHATTAN](#)
[MENU GUIDE](#)
[NEIGHBORHOOD GUIDE](#)
[CLASSIFIED](#)
[PERSONALS](#)
[EMAIL NEWSLETTER](#)
[JOBS](#)
[AD GUIDELINES](#)
[MASTHEAD](#)

PORTRAIT OF INNER HELL

By Stephanie Nolasco

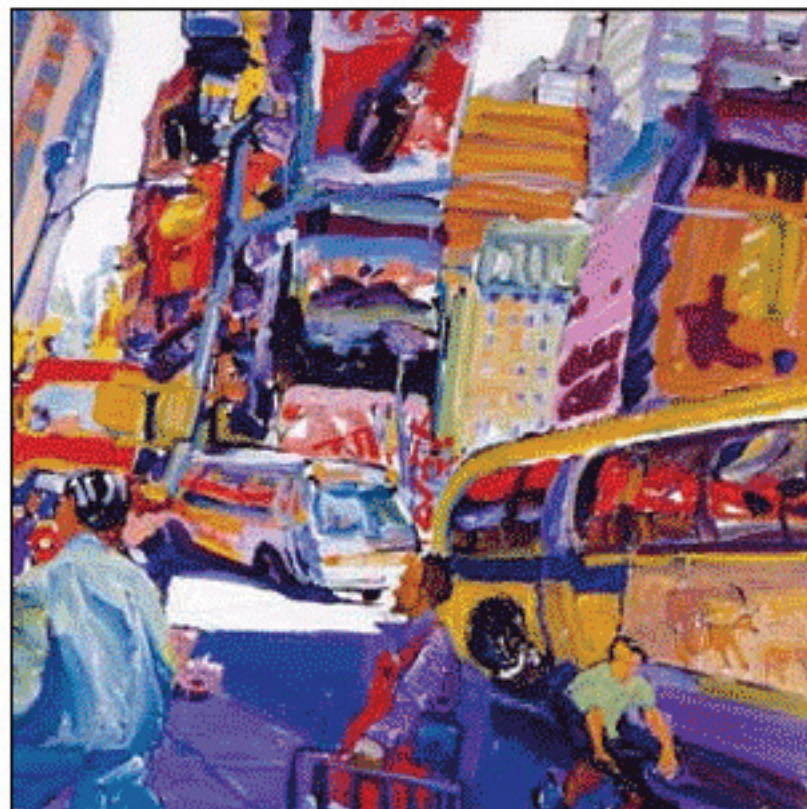
Interpreting Times Square, an exhibition of paintings by Tom Christopher, is the latest interpretation of the city's former mecca of sin turned flashy hellmouth. A celebration inspired by New York City's unofficial capital, Christopher captures the glitz and wonder of the hypnotic epicenter (who knew that all those infuriating, overweight tourists could look so gorgeous when captured in an abstract brush stroke?), this time with a series of painted digital prints on canvas. Using vibrant, festive colors and evocative brush strokes, Christopher captures his muse at its finest—from the hustle-bustle of rush hour to the extravagant evening of Broadway stars—all printed to comprise a 22-foot mural. Of course, this is Times Square, where consumption is at its tackiest, so don't leave empty-handed: take a mini-version in postcard form and spread the love cross-country.

Through August 31. Time Square Alliance Information Center, 7th Ave. (betw. 46th & 47th Sts.), free.

Volume 19, Issue 28

©2006 All rights reserved.

No part of this website may be reproduced in any manner without written permission of the publisher.



READER TOOLS

- [E-Mail the Editor](#)
- [Printer-friendly Version](#)
- [E-Mail this story](#)

[XS](#) | [SM](#) | [MED](#) | [LG](#) | [XL](#)

MORE ARTICLES

About Town

Susan Reiter: Chunky Move

Karina Milchman: Que Comico

Stephanie Nolasco: Fairy Festival

Karina Milchman: Beertastic

Karina Milchman: Roll With Me

Stephanie Nolasco: Portrait of Inner Hell